

## Typical Paint noses on frames used to verify originality of Fontana Tagli Studies in Fontana authenticity, Vol.2

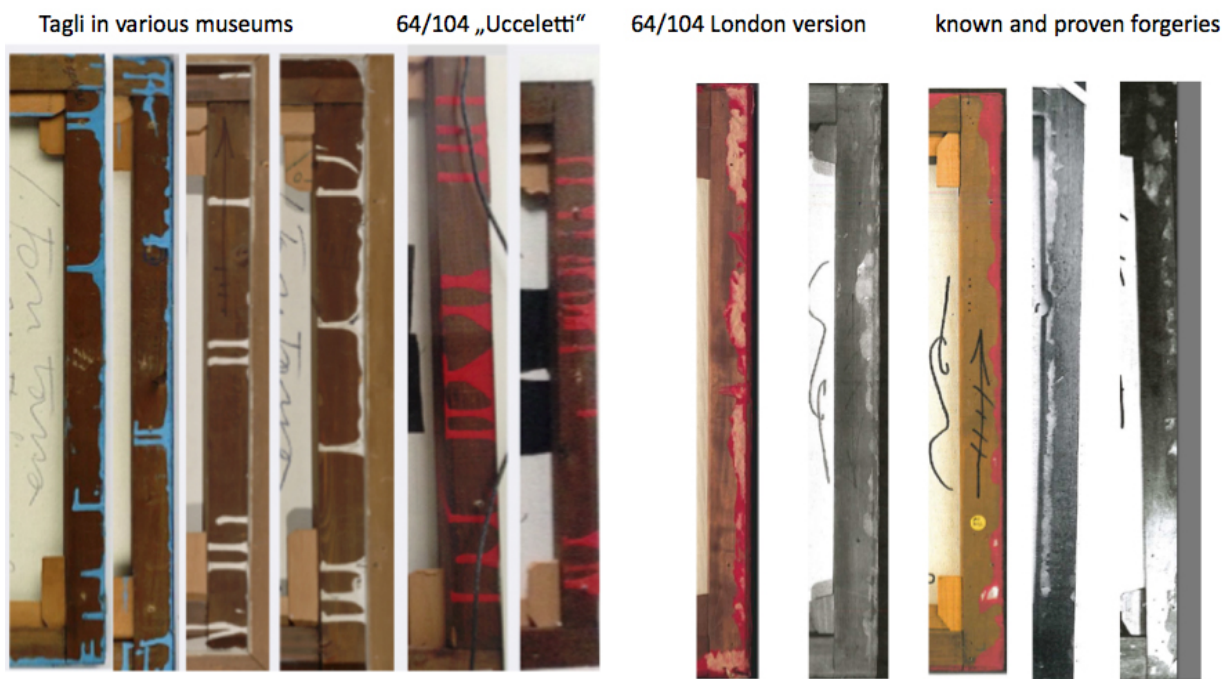
There are more than 1500 tagli by Fontana's hands in existence. Unfortunately, a multitude of forgeries have been around since the 1960s too. In most cases, the Fondazione did a great job in fishing them from the market, albeit not in all, sadly.

Amazingly, most forgers did not even bother to fake the typical paint noses, that derive from Lucio Fontana's (and Hisachika Takahashi's) process of colouring, reversing the frame once at 180° and pre-drying it before the slashes were cut into the semi-dried canvas.

Which makes it conveniently easy to discern between true and forged works, as shown in fig.A.

fig. A

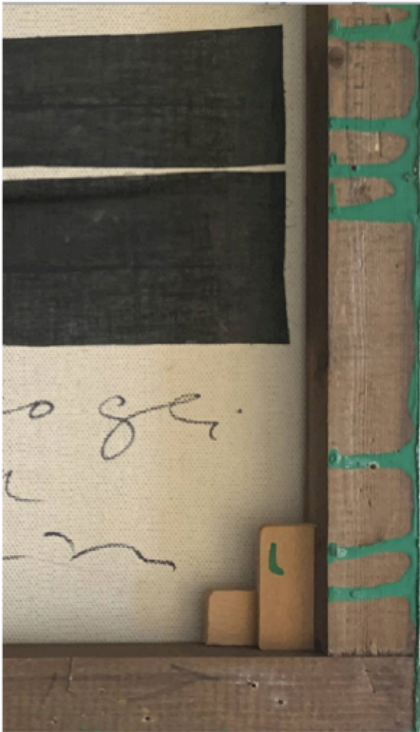
### Fontana Frame and Paint Nose Comparison



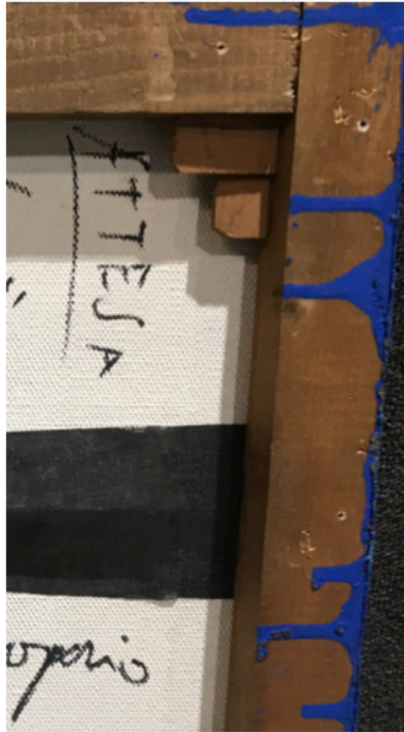
Mushy, spongy colours on the frame are an obvious sign that the taglio in question was NOT made on Corso Monforte, at least not by the hands of the master.

fig. B

KORNFELD 64-65 T 47



PHILLIPS 64 T 134



UCELLETTI 64 T 104

